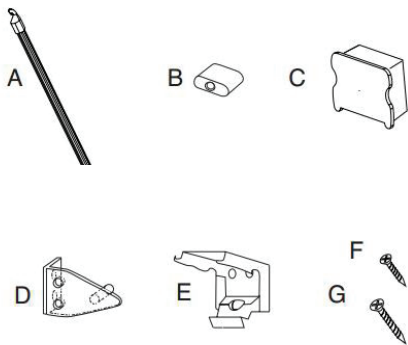


# How to Install Stock Vinyl Blinds

**TOOLS YOU MAY NEED (NOT INCLUDED):**

- Tape Measure
- Level
- Pencil
- Philips Head Screwdriver
- 1/4" Nutdriver
- Drill with 1/16" bit
- Safety glasses

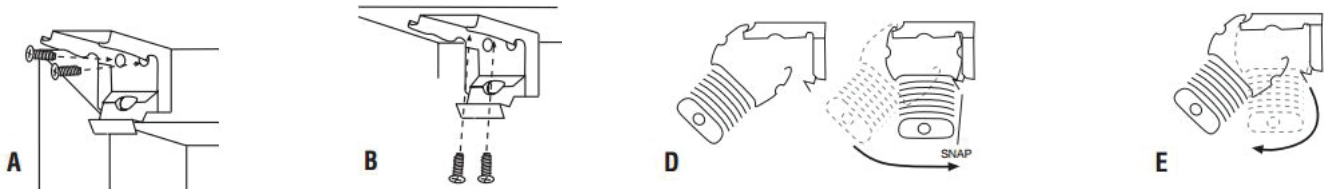
**PARTS LIST**



Width	Up to 38 in.	38 in. to 46 in.	Greater than 47 in.
<b>A. Tilt Wand</b>	1	1	1
<b>B. Bottomrail Endcaps</b>	2	2	2
<b>C. Headrail Endcaps</b>	2	2	2
<b>D. Hold-down Brackets</b>	2	2	2
<b>E. Mounting Bracket</b>	2	3	4
<b>F. #5 Screw x 3/4 in.</b>	4	4	4
<b>G. #6 Screw x 1 1/4 in.</b>	5	7	9

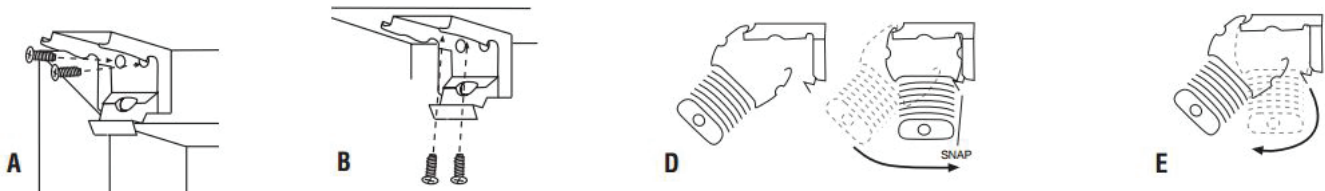
**1. MOUNT BRACKETS**

- Insert respective endcaps into the ends of the headrail and bottomrail.
- Pre-drill holes, if necessary, and install brackets using supplied 1-1/4 in. screws. Fig. A shows how to screw in the brackets for an OUTSIDE MOUNT, and Fig. B shows the same for an INSIDE MOUNT.
- 2-4 brackets have been supplied based on your headrail size. To fully support, install brackets evenly across width of headrail, avoiding working components (Fig. C). Brackets must be at least 1/2 in. from either end.
- Attach the headrail to the bracket by placing the lip of the headrail over the hooks on the front of the bracket. Pivot the headrail up and back until the lower lip of the headrail snaps securely into the bracket (Fig. D).
- To remove blind from bracket, press the tab on the bottom of each bracket and pivot the headrail forward and out (Fig. E).



## 2. HOLD-DOWN BRACKETS (OPTIONAL)

- An optional finishing touch is to install hold-down brackets, which are useful in stopping the blind from swaying in a breezy window or when mounted on a swinging door.
- Simply screw in the brackets using supplied 3/4 in. screws to the mounting surface (Fig. F inside mount or Fig. G outside mount) and slip the hold-down pin into the endcaps of the bottom rail (Fig.H).



## 3. OPERATING YOUR BLIND

### RAISING OR LOWERING

- Keep slats tilted to 45° while raising or lowering.
- To raise or lower the installed blind, pull the cords to the LEFT (Fig. I) to disengage.
- Gently raise or lower to desired position.
- Cords become more pliable after repeated use, resulting in easier operation.

### LOCKING

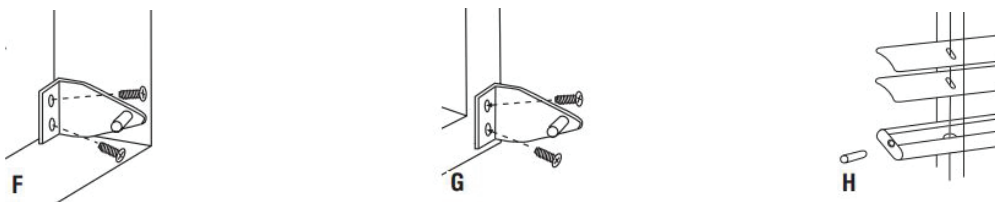
- To lock blind into desired position, pull the cords to the RIGHT (Fig. J). An automatic crash proof cord locking device takes effect when the cords move suddenly when raising or lowering. This prevents the blind from falling down full length.

### SETTING THE COMPONENTS

- After installing the blind, tilt it open and closed then raise and lower it several times. This will allow the cords to align themselves within the components.

### TILTING

- Insert opening on tilt wand on the respective hook located on the left side of the headrail. Turn wand to tilt to desired angle (Fig. K).



---

## SHORTENING BLIND LENGTH (OPTIONAL)

1. Fully lower the blind.
2. Choose the slat which will represent the new bottom of the blind.
3. Remove plastic buttons from bottom rail, remove lift cords and ladder from inside bottom rail and untie knots on lift cords (Fig. L).
4. Remove bottom rail and excess slats (Fig. M).
5. Replace bottom rail by sliding it through the ladder cord and underneath the bottom slat that you chose in step #2 (Fig. N).
6. Insert lift cord through its corresponding hole in the bottom rail and plastic button and tie a knot. Cut off excess ladder cord; leave approximately 2 in. of cord below bottom rail (Fig. O).
7. Tuck remaining ladder cord in bottom rail hole and seal with plastic button (Fig. P).
8. If you have shortened your blind, please refer to Safety Cord-Stop positioning on reverse side.

---

## HOW TO MAINTAIN BLINDS

### Dusting (Vinyl and Aluminum Blinds)

Dust your blinds regularly. Use a soft clean cloth, chemically treated dust cloth, dusting mitt, or vacuum cleaner with brush attachment. Lower blind to its full length then tilt the slats almost fully closed and dust; do the reverse side of the slats in the same manner.

### Washing (Not recommended for Aluminum Blinds)

Wash your blinds using a cloth, sponge, or soft brush and a mild detergent (DO NOT USE HOT WATER). Wash the blind in sections. If blind is small enough, it can be washed in a sink or a tub. (DO NOT SUBMERGE THE HEADRAIL). It can be gently hose-washed outdoors. Rinse off suds thoroughly, remove endcaps and tilt to drain out head and bottom rail. Dry with towel to avoid water marks. Weight the cord, keeping it taut, to minimize kinks and shrinkage while drying.

**NOTE: The warranty for your blinds does not cover damage or discoloration caused by improper cleaning.**

---

## HAZARDS

- Keep cords out of children's reach.
- Remove objects below windows.
- Do not tie cords together.
- To keep cords out of children's reach use one of these devices available at hardware or window covering stores:
  - Cleat (Fig. Q)
  - Clamp or clothes pin (Fig. R)
  - Tie down device (Fig. S)