

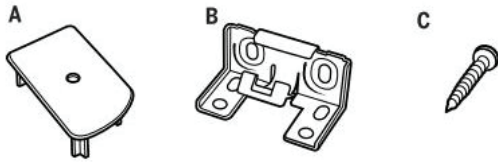
How to Install Stock Cellular Shades

Before you begin your installation:

READ ALL INSTALLATION INSTRUCTIONS!

- Make sure that you have all tools and hardware needed for installation.
- Check the installation surface (wall, ceiling, or window frame) to ensure that you have suitable fasteners and tools for the material.
- Double check the headrail and shade for proper width and length. If you are installing several sets of shades, be sure to match them with the appropriate window.
- Check the parts list shipped with the product to confirm that you have the correct number of brackets.

PARTS LIST

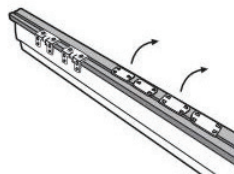


Width	Up to 36"	Greater than 48"
A. Endcaps	4	4
B. Mounting Brackets	2	3
C. #6 Screw × 1 1/4"	4	6

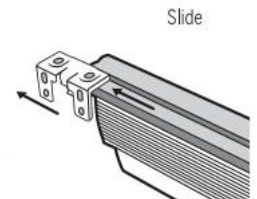
1. TOOLS YOU MAY NEED (NOT INCLUDED):

- Tape Measure
- Pencil
- Flat-blade or Philips Head Screwdriver
- Drill with Bits

2. UNPACKING THE PARTS

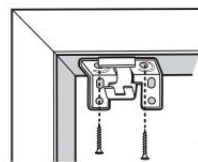


Remove these parts packed in the headrail.
Quantity varies with shade size.

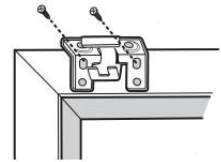


3. BRACKET PLACEMENT

Pre-drill wood frame if necessary.

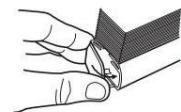
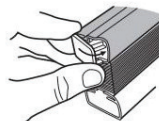


Inside Mount



Outside Mount

4. ENDCAPS



5. SHADE ATTACHMENT

